



Arctic Geobotanical Atlas

A plant-to-planet website of maps and related information produced by the Alaska Geobotany Center

www.arcticatlas.org

Abstract:

The Arctic Geobotanical Atlas (AGA) is a web-based multi-scale (plant to planet) collection of geobotanical maps and supporting data. Vegetation is mapped at eight scales ranging from 1:1 scale (1 m² plots) to 1:7,500,000 (entire Arctic). Visualization tools allow users to view thematic maps and raster data by several methods. The AGA currently focuses on the Circumpolar Arctic and Arctic Alaska, but also includes data from the Arctic Long-Term Ecological Research site at Toolik Lake, Alaska, and research sites in the surrounding Toolik Lake Research Natural Area (Imnavait Creek and the Kuparuk River Basin). Diverse geobotanical themes include: vegetation, geology, topography, landforms, surficial geomorphology and soil type. Vegetation data are linked to the literature (refereed publications and/or project data reports), providing detailed community and species descriptions.

The AGA will also be one of the primary outreach and education components for the upcoming Greening of the Arctic (GOA) project (a component of the International Polar Year initiative). The GOA project will examine the spatial and temporal trends of greening in the Arctic, how these trends are affecting the indigenous people of the Arctic, and communicate the results of the study to students, scientists, government agencies and the general public. A variety of tools will help users understand issues related to the greening of the Arctic, and access maps, data and descriptive information from the Circumpolar Arctic Vegetation Map and other maps at several sites along the GOA transects.

The maps and web site were developed at the Alaska Geobotany Center in collaboration with several other groups at the University of Alaska Fairbanks, including: The Water and Environmental Research Center, the Geographic Information Network of Alaska and Toolik Field Station.

Funding is provided by the National Science Foundation (ARC-0425517). The Alaska Geobotany Center is located within the Institute of Arctic Biology (<http://www.iab.uaf.edu/>), University of Alaska Fairbanks, Fairbanks, AK 99775.

Component Projects



Circumpolar Arctic Vegetation Map (CAVM)

The CAVM covers the global region north of the Arctic tree-line. It contains maps and descriptions of the vegetation, bioclimate subzones, floristic provinces, topography, landscapes, lake cover, substrate pH, and plant biomass. This section also contains an area analysis of the map by bioclimate subzones and countries (CAVM Team 2003, Walker et al. 2005)

Alaska Arctic Tundra Vegetation Map (AATVM)

The AATVM is a plant community-level map of Arctic Alaska derived from the CAVM. It portrays the variation in plant communities across all of Arctic Alaska, in contrast to the physiognomic-level mapping of the CAVM (Raynolds et al. 2006).

Toolik Lake/Kuparuk River Basin Hierarchic Geobotanical Atlas (TLKGA)

This is a series of geobotanical maps constructed during and following the Department of Energy's R4D studies at Imnavait Creek (Reynolds and Tenhunen 1996). It includes maps of the Imnavait Creek (Walker and Walker 1996) and Toolik Lake (Walker, et.al. 2006, in prep.) study sites at five scales ranging from 1x1 -m plots where individual species are mapped, to maps of the entire Kuparuk River Basin (approximately 9200 km²).

Photo and Image Library



The Photo and Image Library includes photographs of map units and plant species.

Map Unit Photos and Images

1. Vegetation Units
2. Bioclimate Subzones
3. Images of maps
4. Geomorphnic units

Plant Species Photos

1. Non-Vascular species
2. Vascular species

About the AGA

Contact information, website development credits, funding agencies and collaborators, how the site was developed, how to use the website, standards used to develop the site, a disclaimer, and copyright information.

Supporting Data

Baseline plot information for vegetation, soils, and site factors for the study plots at Toolik Lake, Imnavait Creek, Happy Valley, Prudhoe Bay, and elsewhere

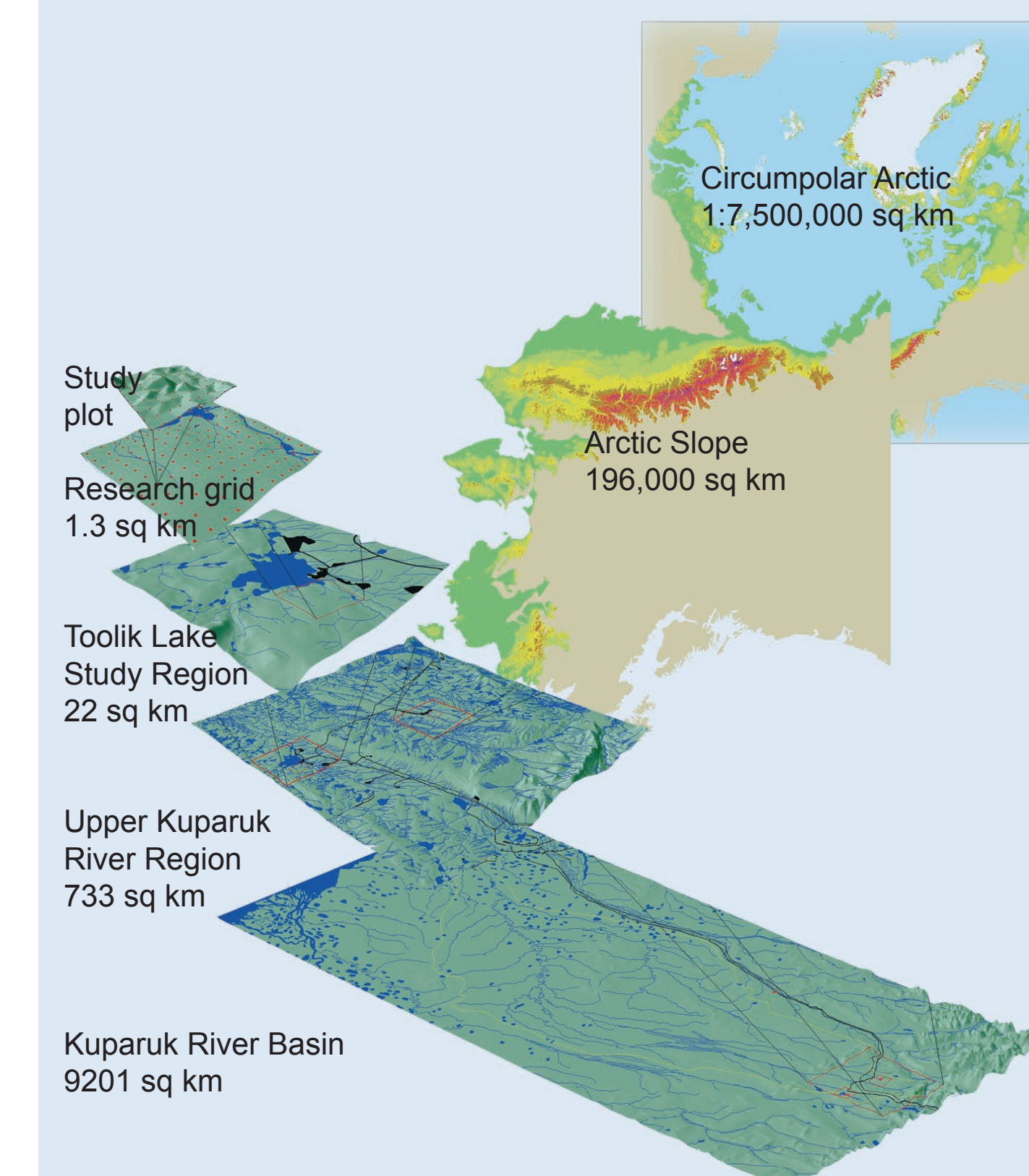
Bibliography

Literature that is cited in various parts of the AGA and a list of key publications produced by the various mapping projects. Citations in the text are linked to the bibliography.

Glossary

An alphabetical list of scientific terms used in the website and publications. Some of the words are specific to the Arctic, and some are more general scientific terms.

Maps



Map Catalog

This section contains all the maps, which can be selected by region, scale, theme, or time. The Atlas also contains digital map data in a variety of forms, including:

1. Map List
2. Digital elevation models (DEMs)
3. Multispectral data (satellite-derived) in pixel or raster format, (maps are also available as PDFs)
4. GIS Vector and Raster Data by region

Structure and Four-Dimensional Framework

The Atlas has a four dimensional framework that allows users to select maps according to any of the following criteria:

1. Region of interest (horizontal dimension)
2. Scale of interest (vertical dimension)
3. Theme or topic of interest (depth dimension)
4. Year of interest (time dimension)

Visualization Tools

Students and researchers can explore the Arctic in a variety of ways. There are three different visualization tools that display GIS data (SwathViewer, GINA Map Server, and TerraExplorer). There are also several short QuickTime movies that fly over the Arctic.

Credits:

H.A. Maier¹ (fnham@uaf.edu), D.A. Walker¹, E.M. Barbour¹, A.W. Balser², J.P. Grimes³, T.A. Heinrichs³, M. Nolan⁴, P. Prokein⁴, C.L. Pylant¹, M.K. Raynolds¹, L.M. Rogan², V.L. Sharpton³, D.L. Stahlke³, and S.G. Vockeroth¹.

¹Alaska Geobotany Center, ²Toolik Lake Field Station GIS, ³Geographic Information Network of Alaska, ⁴Water and Environmental Research Center; all at the University of Alaska Fairbanks, Fairbanks, Alaska 99775.

Presented at the 26th Annual ESRI International User Conference. August 7-12, 2006, San Diego, CA.